

# Sustainability\_EMS Policy



We practice what we preach, and strive not only to incorporate sustainable design into our work, but also in the way we run our business.

## 1. Approach

ADP is committed to continually reducing its environmental impact and improving the environmental performance of buildings that it designs. The practice seeks to prevent pollution and conform with relevant environmental legislation and other requirements that relate to its environmental aspects.

The ISO 14001 Environmental Management Standard is used to ensure rigour in analysis and control of ADP's environmental policy.

## 2. Studio Management

### 2.1

ADP monitors the environmental footprint of its studio functions and seeks cost effective ways to reduce adverse impacts.

### 2.2

Annual audits are carried out to determine the levels of inputs and outputs used in running the practice including carbon emissions and the type and quantities of waste produced. The findings of the audits are used to generate proposals for cost effective reductions in adverse impacts.

### 2.3

ADP's business plan sets out intentions for the growth of the practice in turnover, staff numbers and profitability. The actions sought to reduce adverse environmental impacts are to be monitored both in total and in relation to the number of staff employed.

### 2.4

Architectural practice is highly commercially competitive. Proposals for policies to reduce adverse impacts will be prioritised according to cost effectiveness.

ADP believes that good environmental management is a desirable end on its own and can be a significant contributor to the efficiency, competitiveness and profitability of the business. It is therefore fully compatible with all other aspects of the practice business plan.

### 2.5

Impacts for reduction:

- » Carbon emissions associated with energy use
- » Impact of business travel
- » Quantity of paper used
- » Waste minimisation

## 3. Design Output

### 3.1

ADP seeks to continuously improve the environmental impact of its designs making sustainability central to its design philosophy.

### 3.2

Project specific environmental targets are sought from clients as part of the briefing process.

### 3.3

Designs are reviewed in relation to the brief with standards and resources made available to staff via CPD, knowledge share and the practice Sustainability Team.

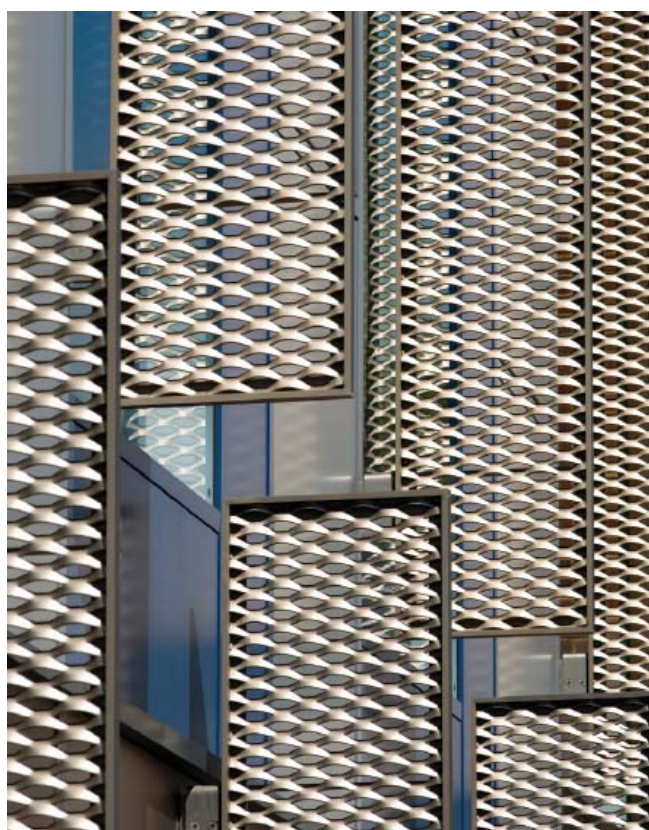
### 3.4

Contract specifications contain controls appropriate to the project to restrict adverse environmental impacts of the construction process.

### 3.5

Feedback is sought regarding the environmental efficiency of design output.

## Sustainability\_EMS Policy



### 3.6

Initiatives for improvement:

- » Use of ADP sustainability exemplar projects to promote best practice and knowledge share across the practice.
- » Improve monitoring and feedback process to improve our knowledge of how our buildings perform in operation.
- » A general increase in environmental efficiency of design output measured from feed back of completed projects, submissions for awards and publicity.

Partner representative:



Roger FitzGerald  
20/01/16